



MEANY CENTER
FOR THE PERFORMING ARTS

2020-21 IMPACT REPORT



ADVISORY BOARD

Cathy Hughes, <i>Co-President</i>	Yumi Iwasaki, <i>Co-President</i>	Marcie Stone, <i>Vice President</i>	John Robinson, <i>Treasurer</i>
Robert Babs	Becky Harris	Sally Kincaid	Donald Swisher
Ross Boozikee	Sue Hou	Jeff Lehman	Rick Szeliski
Luis Fernando Esteban	Kyra Hokanson Gray	Chelsey Owen	David Vaskevitch
Brian Grant	O. David Jackson	Seema Pareek	Gregory Wallace
Aya Hamilton	Susan Joslyn	Donald Rupchock	Mark Worthington

EX-OFFICIO MEMBERS

Ana Mari Cauce, *UW President*
Robert C. Stacey, *Dean, College of Arts & Sciences*
Catherine Cole, *Divisional Dean of the Arts*

EMERITUS BOARD

Matt Krashan, Emeritus Artistic Director, Linda Linford Allen, Cynthia Bayley, Thomas Bayley, Cathryn Booth-LaForce, J.C. Cannon, Elizabeth Cooper, Gail Erickson, Ruth Gerberding, Randy Kerr, Susan Knox, Kurt Kolb, Sheila Edwards Lange, Frank Lau, Craig Miller, Lois Rathvon, Dick Roth, Eric Rothchild, Jeff Seely, K. Freya Skarin, Rich Stillman, Dave Stone, Lee Talner, Thomas Taylor, Ellen Wallach, Kathleen Wright

IN MEMORIAM

Ellsworth C. "Buster" Alvord Linda Armstrong Betty Balcom Ernest Henley Mina Person Jerry Sanford, Sr.

Dear Meany Friends,

Every year I look forward to sharing our *Impact Report* with you. It's a time when we take a moment to look back on our most recently completed season and appreciate all that we've accomplished — and all that you, our friends and supporters, made possible.

This year's *Impact Report* — like the year itself — is a mix of inspiring and surreal, as Meany Center's artists, staff and audiences contended with an uncertain future.

Presenting virtual performances was a necessity during the many months of lockdown — but it also gave us a tremendous opportunity to innovate. Over the course of the season, our tech crew created a TV studio on our stage to allow for livestreamed events; we implemented new protocols to make our content more accessible; and we worked closely with the artists we presented to create intimate, engaging and in-depth explorations of their art through our virtual Creative Process Conversations — many of which you can watch on our website and YouTube channel.

We had two goals this year: to pay artists, whose livelihoods are precarious in the best of times, and to provide our community with engaging arts experiences during a year of isolation, anxiety and loss. Because we offered all our content for free, we had practically no earned revenue this year — and so it was due to the incredible generosity of



STEVE KORN

MICHELLE WITT
EXECUTIVE AND
ARTISTIC DIRECTOR

our patrons, donors and institutional funders that we were able to accomplish both our objectives.

Meany Hall's physical doors may have been shut and our stage dark, but because of you, the show went on! You helped support the 24 artists and ensembles who presented work through our new digital stage, Meany On Screen, and you helped keep Meany Center's core staff on the job as they pivoted to take on new tasks and responsibilities. Because of you, we are still here and ready to welcome our community back to Meany Center for live performances in the fall.

In these pages, we take a look back at an extraordinary year with gratitude in our hearts for all of you who made it possible.

With appreciation,

A handwritten signature in gold ink, appearing to read 'Michelle Witt', written in a fluid, cursive style.



Supporting our **ARTISTS**

BRUCE PALMER

2020–21 artists Ragamala Dance Company.

Meany Center does more than simply present performing artists — we support them through commissions and residencies as well.

Though Meany Center traditionally presents touring artists from around the world, in this pandemic year it also felt important to support local artists who are doing innovative work. The Andrew W. Mellon Foundation's Creative Fellowships Initiative proved the ideal home for such a project because of its mission to support open-ended creative research for artists.

From Stage to Screen

When we first closed Meany Hall's doors in March 2020, we still hoped to present our 2020–21 Season in person. As it became increasingly clear that this would not be possible, our primary goal was to find a way to pay artists whose events had to be canceled and make their performances available to our community even if it couldn't be on our stage.

Thus, Meany On Screen was born.

Of the 24 artists and ensembles originally scheduled for the 2020–21 Season, 16 presented virtual performances, which we offered free of charge to anyone who wanted to see them. In addition, artists provided a variety of extra content ranging from documentaries to virtual conversations that provided insight into their work and creative processes.



Still from Ahamefule J. Oluo's self-produced short film, *The Things Around Us*.

"You don't really know beforehand what things are going to mean to you before you make them, but this piece ended up being very important to me.... I'm grateful to have been afforded the opportunity."

— *Interdisciplinary artist*
Ahamefule J. Oluo

The Things Around Us

Ahamefule J. Oluo was already well known by many on the Meany Center staff as a great interdisciplinary artist — doing performance, stand-up, theater, music — with both a local and national following. He had even filmed part of his award-winning film *Thin Skin* in Meany Center's Katharyn Alvord Gerlich Theater. So when the idea came up to invite local artists to create new work for us, his name was at the top of our list.

We were excited at the prospect of deepening Meany Center's relationship with Oluo through

an open-ended commission: the length, theme, topic and number of artists involved was up to him.

In his performance of *The Things Around Us*, Oluo captures the feeling of isolation, of the mind spinning — even as it is anchored by the everyday objects and activities of more normal times.

In a year when so many performances intended to be seen live have been presented virtually instead, it has been deeply satisfying to present a work that was created specifically for a virtual platform — and that couldn't have been presented in any other context.

Think Globally, Present Locally



One of the artists scheduled for the 2020–21 Season was Ethiopian American musician Meklit, whose latest project, *Movement*, (co-commissioned by Meany Center) would have premiered here in February. Both a live show and a podcast, *Movement* engaged local immigrant musicians in different cities to share their own experiences of immigration through music and storytelling. Though the live show has been postponed until May 2022, Meklit met virtually with three

Seattle-area immigrant artists several times during the lockdown: Haitian American Momma Nikki, Cuban American Kiki Valera and Dakota Camacho, from Guam/Philippines/U.S.



Supporting our **CAMPUS**

PETER NGUYEN

Aerial photograph of the University of Washington campus.

In addition to the artists we present and the audiences we host at visiting artist performances, Meany Center has a third, very important, constituency we serve: the University of Washington campus community.

In a normal year, our theater is a laboratory for faculty and students in the schools of music, dance and drama. COVID-19 seemingly made live performance impossible — but artists are nothing if not tenacious in the face of long odds. With the help of Meany Center’s ace stage crew, the students and faculty in our performing arts units found ways not only to perform together live but also to share their performances with audiences via livestream.

Safety First!

How does an orchestra rehearse in person while following COVID-19 safety protocols?

The instruments in the UW Wind Ensemble were the most difficult to accommodate because they produce aerosols. So, it was the instruments instead of the players who wore masks: bags over the instruments’ bells to minimize the aerosols expelled.

To maintain social distance, both the UW Symphony and the UW Wind Ensemble worked in small groups of six to nine musicians scattered across large spaces in Meany Hall, including the stage, the West Lobby and one of the classrooms. The horn ensemble, meanwhile, played outdoors, on the patios outside the West Lobby and the Greenroom, and sometimes on our loading dock.

Almost Live from Meany Center

With generous support from the Floyd and Dolores Jones Endowed Fund, Meany Center was able to construct a new recording system that included multiple cameras and lighting specifically intended for television, allowing us to build a modified TV studio inside the theater.

Stage lighting and television lighting are very different because cameras “see” differently from the human eye. With the new system, we used TV instead of stage lighting when we created digital content — which made for a better visual experience for viewers.

The benefits of the new “Jones System” extended far beyond the Meany Center Visiting Artists program, however. Between October 2020 and June 2021, Meany Center recorded or livestreamed more than 60 performances by students and faculty in the School of Music, Digital Arts and Experimental Media (DXARTS) department and the Department of Dance.



UW STAFF

Super Conductivity

When the UW Symphony Orchestra decided to livestream a performance with multicamera shots, our tech team didn’t have enough time or staff to stage-manage the event for them — so they decided to teach the orchestra how to do it themselves.

Working with three Ph.D. conducting students, the tech team taught them how to look at the musical score and script the shots they wanted, so the performance was not just about how it is *heard*, but also about how it is *seen*.

It turns out being a music conductor requires much the same mindset as a video director — you have to know where you’re going before you start. Normally it takes years and years to develop the necessary skills, but according to our crew, those three Ph.D. candidates are now able to direct videos after just a few months, adding yet another talent to their portfolios.



UW STAFF

Only Connect

In 2020, Meany Center joined with the School of Music to nominate Ethiopian American singer and musician Meklit to speak on *How Music Connects Us: Belonging, Wellbeing, and Sonic Lineage*, as part of the UW Graduate School lecture series.

Meklit was originally scheduled to speak in person at Kane Hall. Instead, she delivered her talk via livestream to an audience that was geographically scattered. And yet, there was something undeniably intimate about watching her from our own cocoons as she sat alone in her studio, joyously exploring how to make connections through music. This wasn’t a “talk” to an audience; it was a conversation among friends.



UW STAFF

Top: Meany Hall’s stage lighting. Middle: Tech team member Juniper Shuey and Brian Engel. Above: Meklit lecture *How Music Connects Us*.



Supporting our **COMMUNITY**

THIRD COAST PERCUSSION

Children creating sounds effects in Third Coast Percussion's *Our Sonic Homes*.

With the world shut down, home delivery became the new normal for everything from groceries to restaurant meals to education.

At Meany Center, we offered a varied menu to our community: full-length performances in dance and music; prerecorded conversations in which Executive and Artistic Director Michelle Witt talked with artists about their work; and informal live Zoom events where the audience could speak with artists directly. We even had a special kid's menu to inject a little fun into the lives of young people, their families and teachers during a challenging year of remote learning.

A Really Big Deal

"My student who was featured (in *Our Sonic Homes*) was so pleased and his classmates were so proud of him and were really inspired by his playing. About my student — he's a twin and he's the quiet twin. He's got an IEP (Individualized Education Plan) for a few things and I sometimes get the sense that he doesn't think of his abilities with confidence — school just doesn't emphasize some of the things he really shines at. I think it was a really big deal for him to see his music represented in that composition. And it was great for his classmates to be able to see him and his talents in a really unique and special way."

— Emily Wetzel, third-grade teacher, Wing Luke Elementary School

Matchmaker, Matchmaker

Choreographer Mark Morris and pianist Angela Hewitt presented virtual work for our 2020–21 Meany On Screen season. Because they were scheduled back-to-back, we wondered if they would agree to engage in a Creative Process Conversation around their shared love of Mozart.

The resulting conversation was rich, informative and entertaining as the two artists, who had never met before, started out discussing Mozart and ended up agreeing they should collaborate around their shared love of the music of Bach. It was a match made at Meany!

Bang the Drum Loudly!



SAVERIO TRUGLIA

Third Coast Percussion.

2020 was a difficult year for K–12 students, their teachers and their families, as education moved online, and the kitchen table became the classroom. At such a time, providing arts

enrichment activities for children that were not only educational but joyful, creative and exciting was perhaps the greatest service Meany Center could deliver to our community.

In November, we presented an interactive virtual residency specifically for younger students. *Playful Composition with Third Coast Percussion* began with five short video performances by Third Coast Percussion, interspersed with teaching

moments. The videos introduced the building blocks of music (rhythm, melody and timbre) through participation in a series of interactive activities, including clapping, singing and listening.

The final video, *Sonic Scavenger Hunt*, invited participating students to find, make and record sounds and rhythms using everyday household items and submit them to Third Coast Percussion to incorporate into a new composition.

The kids got pretty creative; the resulting composition integrated sounds made by deflating a balloon, dragging a pencil across the strings of a tennis racket, slapping together the soles of a pair of shoes, and crumpling bubble wrap, among other innovative percussive inventions.

Fittingly, the composition was named *Our Sonic Homes*.

Lights! Camera! Closed Captioning!

In addition to presenting performances online, Meany Center also hosted numerous Creative Process Conversations featuring artists, short documentaries and live Zoom opportunities for patrons, donors and students to meet and talk with artists on our Season.

Events like these are more accessible at Meany Hall for people with hearing difficulties, who can request an assistive listening device. But virtual presentations required something more. House

Manager Noah Duffy took the lead on providing closed captioning for every prerecorded feature and Creative Process Conversation that Meany Center offered. For live Zoom events, we relied on automatic captioning.

Our continuing efforts to become more equitable and accessible for all include an accessibility audit of our physical space, and a diversity, equity and inclusion audit of all our marketing and communications materials.

Meany Index

UNSEEN HEROES

Meany Hall's stage was dark this past season, but the shows still went on — online and behind the scenes. Every staff person at Meany Center had to figure out new ways to get the job done — for many of us, that meant finding a quiet spot to set up a laptop to do our work.

But for the six people who staff our ticket office, continuing to provide exceptional patron services from home was particularly challenging. Ticket exchanges, cancellations and renewals all require bulky equipment such as credit card terminals, multiple monitors, desk phones and headsets — not to mention the space to set them up.

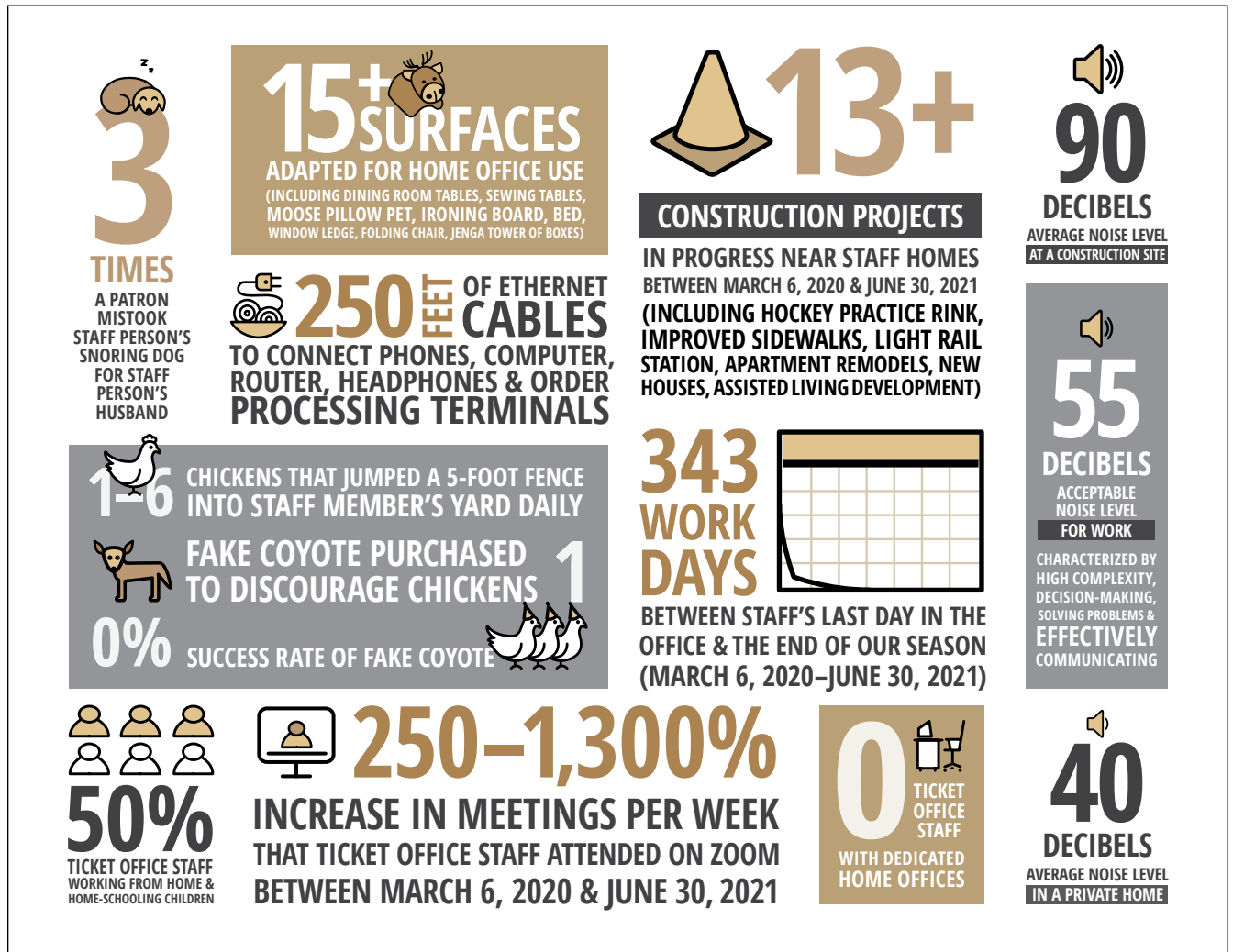
In addition, the team had other challenges as well: a new payment processing system, new changes to the database,

Meany by the Numbers — Some Exceedingly Odd.

“There is divinity in odd numbers.”
— William Shakespeare

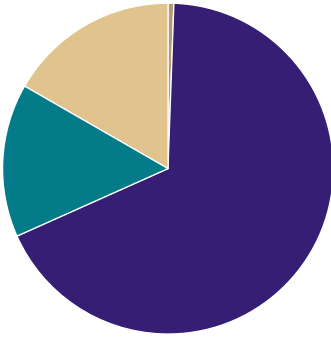
new print-on-demand tickets, new memberships for the School of Drama and a new website rebuild — all with steep learning curves that had to be mastered remotely.

Surviving this year required patience, endurance, a little dark humor, a lot of chocolate — and noise-canceling headphones to combat (among other things) trumpet practice, construction noise and hours of beginner cello scales through thin walls. In honor of our ticket office team, Rosa, Abbey, Cathy, Colette, Keeli and Liz, here is their year “by the numbers.”



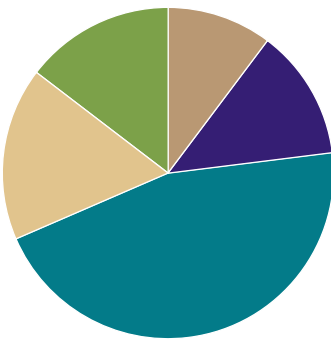
Meany Center
VISITING ARTISTS PROGRAM
FINANCIALS

FY21 OPERATING INCOME



Ticket Handling Fees	\$9,000	0%
Contributions	\$1,071,000	68%
University Support*	\$237,000	15%
Endowment Distribution	\$264,000	17%
Total FY21 Income	\$1,581,000	100%

FY21 OPERATING EXPENSES



Performing Artists	\$162,000	10%
Production Expenses	\$202,000	13%
Marketing & Outreach	\$719,000	45%
Fundraising	\$267,000	17%
General Administration	\$231,000	15%
Total FY21 Expenses	\$1,581,000	100%

*University support of \$248,000 is reported net of a 15.6% administrative overhead fee on self-sustaining revenue, or approximately \$11,000 for FY21.
 NOTE: Dollar amounts rounded to the nearest thousand.

2020-21

PLANNED GIFTS & ENDOWMENTS

Total Market Value: **\$9,548,629** (as of July 1, 2021)

New Contributions to Principal: **\$1,222,000**

Endowment Distribution: **\$264,000**

Planned Gifts

Linda & Tom Allen
 Wimsey J.N. Cherrington
 Consuelo & Gary Corbett
 Bill† & Ruth Gerberding
 Michael & Nancy Kappelman
 Matthew & Christina Krashan
 Tomilynn & Dean McManus
 Cecilia Paul & Harry Reinert
 Lois Rathvon
 Dave & Marcie Stone
 Donald & Gloria Swisher
 Lee & Judy Talner
 Ellen J. Wallach
 Anonymous

Ellsworth C. & Nancy D. Alvord Endowed Fund

Estate of Ellsworth C. Alvord**
 Jane Blackwell
 Kathy Brostoff & Melvin Belding
 Sharon Ducey
 Jennifer Nagel
 Melissa Nathanson

Arts Alive Student Fund for Exploring the Performing Arts

Robin Feuchtwang
 Susan Knox & Weldon Ihrig*

Sylvia & Steve Burges Meany Center for the Performing Arts Endowment

Sylvia & Stephen Burges*

Nancy & Eddie Cooper Endowed Fund for Music in Schools

Dave & Marcie Stone*

Katharyn Alvord Gerlich Endowment for Artistic Excellence

Katharyn Alvord Gerlich*

Elaine & Ernest Henley Endowment for Classical Music

Anne Futterman
 Elaine & Ernest Henley*†
 Drs. Karen Henley & Laurie Goldman
 Eli Livne & Esther Karson
 John Martines & Joel Gibson
 Penelope Yonge

Catherine & David Hughes

Asian Programming Endowment
 Shu-Hui Hou
 Catherine & David† Hughes*

Matt Krashan Endowed Fund for Artistic & Educational Excellence in the Performing Arts

Lee & Judith Talner
 (Multiple founders)

Live Music for World Dance Series Endowed Fund

Roger & Janis Birnbaum
 Susan Frankel
 Cecilia Paul & Harry Reinert*

Meany Center Education Endowment

Jill Hanley Conner

Meany Center Programming Endowment Fund

Natarajan Janarthanan &
 Ponni Rajagopal
 Zaiga Phillips

Margaret Dora Morrison Meany Endowed Fund

Miss Margaret Dora Morrison**

Mina Brechemin Person Endowed Fund

Alice de Anguera
 Estate of Mina B. Person**

Gloria Wilson Swisher Music Education & Outreach Endowment

John & Nancy Angello
 Donald & Gloria Swisher*
 George Wilson & Claire McClenny
 Deborah Wilson & Ngan Chong Teng

*Endowment founder

†Deceased

NOTE: Dollar amounts rounded to the nearest thousand.

Thank You FRIENDS of MEANY

PRODUCER'S CIRCLE

Sylvia & Stephen Burges
Katharyn Alvord Gerlich
Sally Schaake Kincaid
Margaret D. Morrison*

DIRECTOR'S CIRCLE

Linda & Tom Allen
Warren & Anne Anderson
Ariel Fund
Sven & Melinda Bitners
Sharon Gantz Bloome
Delaney & Justin Dechant
Britt East & Scott VanGerpen
Lynn & Brian Grant Family
Hugues Hoppe & Sashi Raghupathy
Cathy Hughes
Yumi Iwasaki & Anoop Gupta
Hans & Kristin Mandt
Thomas McQuaid
Chelsey Owen
Cecilia Paul & Harry Reinert
Lois Rathvon
Eric & Margaret Rothchild
Ellen Wallach & Thomas Darden

SERIES BENEFACTOR

Mel Belding & Kathy Brostoff
Daniela & Torsten Grabs
Amy & Christopher Gulick
M. Elizabeth Halloran
Richard & Nora Hinton
Ilga Jansons & Mike Dryfoos
Karen Koon
Matthew & Christina Krashan
Seema Pareek & Gurdeep Pall
John C. Robinson & Maya Sonenberg
Don & Toni Rupchock
Dave & Marcie Stone
Donald & Gloria Swisher
Donna & Joshua Taylor
George Wilson & Claire McClenny

EVENT SPONSOR

Heidi Charleson
Gail Erickson & Phil Lanum
In memory of Toby Faber
Wolfram Hansis
Elizabeth Hebert
Hokanson Family
Tuck Hoo
Susan Knox & Weldon Ihrig
Olivia Lee
Bill & Meg Morgan
Lee & Judith Talner
Gayle & Jack Thompson
Manijeh Vail
Ernest Vogel & Barbara Billings
Gregory Wallace & Craig Sheppard
Michelle Witt & Hans Hoffmeister
Anonymous Friends

DISTINGUISHED PATRON

Charles Alpers & Ingrid Peterson
Jonas Barklund
Jillian Barron & Jonas Simonis

*Deceased

Cynthia & Christopher Bayley
Thomas Booth
Cathryn Booth-LaForce & W. Kenneth LaForce
Kalman Brauner & Amy Carlson
Leo Butzel & Roberta Reaber
Mariann Carle & Thomas Manley
Consuelo & Gary Corbett
Joanne Cormier & Steven Koenig
William & Janet Corrison
The Cramer Poppema Family
Sallie Dacey & Michael Linenberger
Karen Domino & Gene Brenowitz
Sharon Ducey
Susan & Lewis Edelheit
Luis Fernando & Isabelle Maria Esteban
Virginia Fitzhugh & Miguel Morales
Eldon & Kristi R. Franz
Karen Freeman & Kevin Murphy
Ruth A. Gerberding
John Goodfellow & Barbara Peterson
Kyra Hokanson Gray
Gerald & Carolyn Grinstein
Arthur & Leah Grossman
Aya Stark Hamilton & Richard Welk
Susan Herring
Susan Hert & William Levering III
Peter Hiatt & Ronald Huden
Thomas Highsmith & Stuart Fountain
Alan Hodson
Paul Hopp
Mary & Michael Hudspeth
Bernita W. Jackson*
Julia Kalmus & John Lillard
Beverly & Otis Kelly
Randall & Kimberly Kerr
Frank & Joanna Lau
Leander Lauffer & Patricia Oquendo
Barbara Mack
Jeffrey & Barbara Mandula
Kristin Djos Martin & Wayne Martin
Melodie Martin & Kenneth Dayton
Patricia McKenzie & Leonard Costello
Chris & Mary Meek
Robin Mendelson & Josse Delage
Craig Miller & Rebecca Norton
Naomi & Yoshi Minegishi
Cynthia Mullis & Carolyn Caster
James & Pamela Murray
John Nemanich & Ellendee Pepper
Anne & Bill Nolan
Dan & Gloria Overgaard
Richard Parks
Deborah Person
Cheryl Redd-Cuthbert & Richard Cuthbert
Paula Riggert
Michael Schick & Katherine Hanson
Amy Scott & Stephen Alley
Jeff Seely & Kim Brown Seely
Kathleen Lindberg & David Skar
Carrie Ann Sparlin
Ethel & Bob Story
Dale Sylvain & Thomas Conlon
Richard Szeliski & Lyn McCoy
Lorraine Toly
Kris & Epaminondas Trimis
Nick Utzinger & John Rochford

Josephus Van Schagen & Marjon Floris
Greta Ward
Robert & Andrea Watson
Susan Way & Clark Sorensen
Kathleen Wright & Martin Greene
Evgueni & Tatiana Zabokritski

PATRON

Joan Affleck-Smith & Nepier Smith
Marleen & Kenneth Alhadeff
Nancy & John Angello
Therese Atkinson
Heather & Mark Barbieri
Cristi Benefield
George Gilman & Heida Brenneke
Rita Calabro & Jim Kelly
Eric Carnell
Ross & Julie Case
Joan Cavagnaro
Sandra & Daniel Ciske
R. Bruce & Mary-Louise Colwell
Jill Hanley Conner
James Corson & Linda Kent
Susanna Cunningham
Judy Cushman & Robert Quick
Bur Davis
Jennifer Davis
Margaret & Robert Dunn
Edward Darr & James Fesalbon
Karen Elledge & Gerald Ginader
Patricia Emmons & Shmuel El-Ad
Susan Ewens & James Luby
Gerald Folland
Brenda Fong
Gary Fuller & Randy Everett
Anne Futterman
Sergey Genkin
Joanna & Lane Gerber
Lester Goldstein
Chris Gross
Lynn Hagerman & James Hummer
Valerie Hajdik
Susan & Richard Hall
Steven Haney
Michael Hanrahan
Becky Harris & Andrew Smith-Jones
Judith Harris & Albert Fisk
Phyllis Hatfield
Olga & Fred Hauptman
Karen Henley & Laurie Goldman
David Hewitt & Marcia Wagoner
Alice & Paul Hill
Kate Hokanson
Randolph & Gwen Houser
Patricia Hynes
Brenda Jackson
Robert Jenkins
Meg Johnson
Sima Kahn
Michael & Nancy Kappelman
Deborah Katz
Mary & George Kenny
Judith Kimelman & Robert McRuer
Joseph & Anne-Marie Knight
Kent Koprowicz
Glen Kriekenbeck & Quentin King

Eleanor Lang
 Rosalie Lang
 Eric Larson & Teresa Bigelow
 Diane Lasko & Clinton Diener
 Carla & David Lawrence
 Thomas & Rhoda Lawrence
 Lauren & David Lawson
 Teresa Lawson
 Margaret Levi & Robert Kaplan
 Martha Lester
 Arlene Levy
 Betsy Lieberman & Richard Groomer
 Eli Livne & Esther Karson
 Pierre Loebel & Felice Loebel
 Dennis Lund & Martha Taylor
 Marcella D. McCaffray
 Sean McCain
 Wayne McCleskey
 Dean & Tomilynn McManus
 Gail & John Mensher
 Sarajane & Michael Milder
 Linda & Peter Milgrom
 Reza & Carol Moinpour
 David Morris
 Margarete Noe
 Harry & Mariette O'Donnell
 Amanda Overly
 Darcy & Enzo Paschino
 Laura Patton-Ballard & James Ballard
 Mike & Susan Peskura
 James Phelps & Ena Urbach
 Frances Posel
 Philip & Barbara Quinn
 Wendy & Murray Raskind
 Jason Reuer
 Cynthia Richardson
 Joy Rogers & Bob Parker
 Mark & Barbara Roller
 Catherine Roth
 David & Joanne Rudo
 Werner & Joan Samson
 John & Margaret Sanders
 Cathy Ann Sarkowsky
 Charles & Joan Schooler
 Louise Shields
 Sigmund Snelson
 Robert & Robin Stacey
 Marcia & Douglas Stevenson
 Annette Strand & Tim Groggel
 Robin B. Thomas
 Mary Anne Thorbeck
 Peter van der Meulen
 Gail & John Wasberg
 Mark Wener & Corinne Fligner
 John & Lynn Williams
 Nancy York
 Anonymous Friends

GREAT PERFORMER

David Aggerholm & Gwendolyn Lundberg
 Richard Ammerman
 Michael Anderson
 Ken Argo & Mary-Anne Szollar
 Jean-Loup & Diane Baer
 Elisabeth Beaber
 Nancy & Sam Bent
 Robert Bergman
 Luther Black & Christina Wright
 Helen Bodkin

William Bollig
 Deb Bowen & Linda McBlane
 Carolyn & Matthew Bowman
 Josephine Bramwell
 Stephen Bryant & Allan Golston
 Judy Buckham
 Carolyn & Alan Butler
 Susan Butler
 Eric & Susan Carlson
 Danielle & Jack Carr
 Inez & Lior Caspi
 Phyllis & Alan Caswell
 Pamela & Robert Center
 Fran Clifton
 Nancy Connery
 George Counts
 Margaret Crastnopol & Charles Purcell
 Forrest Crowell
 Misti Davis
 Toby Diamond
 Susan & David Dolacky
 Nancy Dorn
 Robert & Donna Dughi
 Arlene Ehrlich
 Robert Eisenman & Ingrid Lahti
 Gail & Edmond Eng
 Douglas & Robin Ferguson
 Pamela Fink & Michael Bevan
 Susanne Foster
 Susan & Albert Fuchs
 Anne Good
 Nancy & Earl Grout
 Emile Haddad & Terryll Bailey
 Susan Hamilton & Timothy Bates
 Kara Hefley & James Leigh
 Robin Hendricks
 Shu-Hui Hou
 Julie Howe
 Anne Huey
 Sarah Jackins
 Mari Jalbing & James Robart
 Mary E. & Giff Jones
 Jeannette Kahlenberg
 Paul Kassen
 Ronit Katz & Hank Levy
 Marianne & Frederick Kiga
 Marianne Kogon
 Christian & Patricia Killien
 Frederick Klein
 Adam Kline & Genie Middaugh
 Alan Kristal
 Jason Lamb
 Nancy Lawton & Steve Fury
 Martha Starr Lester
 Rhonda Levitt & Charles Cowan
 Ruth Levy
 Carol Losi
 June & Paul Lowenberg
 John Macartney
 Doug Macdonald & Lynda Mapes
 Betty & Donald Mastropaolo
 Lila Woodruff May
 Meredith McClurg
 Carol McCready-Cohn & Steven Cohn
 Mary Mikkelsen & Mike Green
 Sheree Miller
 Christine Moss
 Pamela Mullens
 Robert Nellums

Caroline Potter Normann
 Angela Pellegrini Owens
 James Packman & Andrew Cohen
 Cathy Palmer
 Kathryn Pearson
 Zaiga Phillips
 Christopher Pickert
 Stacey Prince
 Dennis Reichenbach
 Helen & Jack Remick
 Carla Rickerson
 Joy Rogers & Bob Parker
 Harriet Round
 Margaret Sandelin
 Laura Sargent
 Winston Saunders
 Nathan Schimke & Yvonne Wing Lam
 Janet Schweiger
 Charyl & Earl Sedlik
 Dennis Shaw & Julie Howe
 Eric Ishino & Ron Shiley
 Marcia Sohns & Mark Levy
 Evelyn Sterne
 Mary Kay & Henry Stiles
 Virginia Sybert
 Barbara & David Thomas
 Diana & Richard Thompson
 Emily Transue
 Dennis & Dorene Tully
 Michelle Turnovsky
 Kymberly & Jeremy Waltmunson
 Tanya Ware
 Carol & Jeff Waymack
 Joella Werlin
 Lynne Werner & David Olsho
 C.R. Williams
 Carolyn Wood
 Ann Yamane & Keenan Kane
 Barbara & Lee Yates
 Valerie & Todd Yerkes
 Penelope Yonge
 Carol Young
 Maxine Zemko
 Anonymous Friends

KEY PLAYER

Franklin Albano
 Elizabeth Anderson
 Randy Apsel
 Rick Asher & Jocelyn Curry
 Donna & David Auer
 Gail Austin
 Robert Babs
 Ethel Bain & Victor Araya
 Wendy & Jonathan Bannister
 Timothy & Anthony Barrick
 Holly Bays
 Dana & Rena Behar
 Marie & Charles Bender
 Andrew Benjamin & Nan Hebert
 Victoria Bennett
 Dennis Birch & Evette Ludman
 David Bird
 Jane Blackwell
 Michael Bolasina
 Debra Booth
 Lydia & Scott Brennan
 Joyce & David Brewster
 Elaine Brighton

FRIENDS *of* MEANY

Paul Brown & Amy Harris
Kristin & Richard Brownfield
Lorraine & Harry Bruce
Deborah & David Buck
Susan Butler
Charlotte & William Byers
Pamela Cahn
Dianne Calkins
Sharon & Craig Campbell
Ellen & Albert Carlin
Frances Carr
Connie Case
Diane & Glen Casper
Catherine Cassidy
John Casseday & Robin Luke
Lisa Wickstrom Chandler & Daniel Chandler
Arthur Chapman
Laurie & Grant Chyz
Patricia Cirone
Jennifer Coates & Samuel Brody
Merrilee Conway & James Young
Jonathan Cooper & Diane Doles
Carol Corbin
Kathy Cowles & Bradford Chamberlain
Jean Crill
Gavin Cullen & David Jamieson
Brian Curless
Elizabeth & John Darrah
Alice de Anguera
Janice DeCosmo & David Butterfield
Barbara Dennard & Steven Schlossman
Paula Deutsch
Theodore Dietz
Janice Dilworth & Gregory Denton
Christine Disteche & Raymond Monnat
Ann Dittmar
Norman Dizon
Carolyn Dobbins
Daniel Doherty & Erika Walther
Charles Domingue
Cynthia Dout
Giselle Falkenberg & Rockwell Moulton
Ann Duerr
Kathleen & Edward Dunn
Lynne & Hollie Ellis
Elizabeth Erickson
Marlys Erickson & Chris Hurley
Nicole Faghin & David Spence
Giselle Falkenberg & Rockwell Moulton
Marjorie & Richard Fiddler
Melanie Field
Pia & Russell Fish
Carol Flexer
William Friedman
Kai Fujita
Jacqueline Gardner & Gary Elmer
Janet Geier & Peter Seitel
Beth Gendler & Reginald Zisette
William & Masuko Giesecke
George Gilman
Sara Glerum
David Godwin & Ginger Reeves
Russell & Susan Goedde
Jack & Cynthia Goldberg
Joan & Steven Goldblatt
Frances H. Goldman Fund of Greater
Cincinnati Foundation
Kathleen Gorham & Gerald Tuttle
Cynthia Gossett

Betty Graham
Gene Graham
Katherine Graubard & William Calvin
Harvey Greenberg
Karen Greene
Mary Kay Grossblatt
Willa & Walter Halperin
Amy Harris & Paul Brown
Richard & Tandy Hennings
Kathleen Henwood & Robert Sheu
Steve Hersch
Merrill & Bertil Hille
Sara Houston
Mary & Brian Hunt
Rejean Idzerda
Melanie Ito & Charles Wilkinson
Russell Jacobs
Linda Baker Johnson & Christopher Johnson
Robert Johnson & Heather Erdmann
Nancy Joseph
Margot Kadesch
Kate Dougherty & Aaron Katz
Sue & Frank Kent
David Kimelman & Karen Butner
Jane King & Allen Cheadle
Michael & Beret Kischner
James & Elaine Klansnic
Nancy & John Kloster
Oliver Kou
Judith Kroll
Robert Kunreuther
Louise Kurabi
Joshua D. Larios
Kathryn Lew & Dennis Aplan
Beverly & Larry Leyman
Reiling & Chikun Liao
James & Marianne LoGerfo
Rhianon Lombard
Larry Macmillan
Sara Magee
Ronald Magid
Michael Magie
Suresh & Anjali Malhotra
Renee Marceau
Wendy Marlowe
John Martines & Joel Gibson
Mary Mathiason & Susan Wildermuth
Roland Mayer
Candice McCoy & Peter Tarczy-Hornoch
Mary McGuire
David McLean
Susan McNabb
Ramona Memmer
Vera Metz
Jacquelyn & Gordon Miller
W.C. Mills
Lawrence Mirkes
Stephen Moody
Anne Morrison
Susan Mulvihill & James Liverman
Roberta Muradian
Linda & Alan Murray
George & Ellen Naden
Melissa Nathanson
Joseph & Kay Neal
Greg Nelson & Cynthia Doll
Marianne Nijenhuis
Jennifer Mitsuyo Nomura
Eileen O'Connor & Craig Shaw

Dennis Oliver & Stephanie Prince
Robert Otto
Ruth Pattison
Pamela Perrott
Anna & David Peterson
Jeanne Peterson
Richard Peterson
Lisa Pfeiffer
Diana Pien & Merle Weiss
Sandra Piscitello
Harriet Platts & Davis Frederick
Frank & Judith Pollard
Ellen Posel
Stephen Poteet & Anne Kao
Angel & Wayne Prentiss
Joan & Anthony Prining
Tina Ragen
Charles Reed
Tracy Reed & Andrew Bauck
Jean S. Rennebohm
Meryl Retallack
Carrie Richard
Chester Robachinski
Deborah Roccanova
Janis Rogainis & Bonnie Way
Josephine B. Roskin
John & Janet Rusin
Jill Ryan & Stephen Kerr
Murl Sanders & Janet Hesslein
Howard Schanzer
Mark Scherschel
Douglas Schneider
Loretta & Stephen Schuler
Jean Schweitzer
Kate & Noah Scooler
Patricia Scott
Elaine & Herbert Selipsky
George Sharp
John Sheets
Ann Lin Shoemaker
Douglas & Kaherine Holway Smith
Kathleen Smith-Dijulio & Donald Dijulio
Michele Soble & Kalman Klass
Taka & Sybrina Soga
Karen & Mani Soma
Ruth & Harold Spalter
Alison Stamey
Sara Stamey & Winston Saunders
April Stevens
Pamela Stromberg
Jeffrey Sutton
Dawson & Lois Taylor
Nancy Taylor & Fred Levy
Susan & Clay Thompson
Myrna & Donald Torrie
Russell & Sarah Tousley
Phyllis Van Orden
Elsa & Arthur Vetter
Virginia Stamey
Yvonne & Bruno Vogele
Patricia & Edward Wagner
Ellen & Bill Wanless
Eugene & Marilyn Webb
Richard & Ann Weiner
Sheryl Westergreen & Leslie Wright
Christine & Bruce White
Stephen & Mary Whitmore
Susan Whitmore
Karin Williams

Deborah Wilson & Ngan Teng
 Phillip & Constance Winberry
 Bic Wong
 Stephen Wong
 Amy Wong-Freeman
 Ted Yackulic
 Amy Yeater
 Ying Gi Yong
 Ed Zilberts

FRIEND

John Allemand
 Adrienne Allen
 Stuart Allen & Sunny Liu
 Margaret Almen
 Judy & Jeff Altman
 Marvin & Suzanne Anderson
 Barbara Baker
 Marianne Sarah Beirne
 Carol & John Belton
 Terry & John Berg
 Carol Birch
 Roger & Janis Birnbaum
 Marie Remedios Booker
 Loren Bors
 Richard & Wendy Borto
 Lisa & Steve Boulanger
 Ann Brand
 Virginia & Thomas Brewer
 Melinda Bronsdon
 Shannon Bryan & William Molloy
 Dennis Burkhardt
 Carolyn Butler
 Robin Calderon
 Leticia Caldwell
 Susan Campbell
 Melanie Candia
 Susan Carretta
 Mary Childs
 Kate Chilson
 M. L. Cleyne
 Lisa Conaghan & Steven Sun
 Sue Connell
 Mary Jane Cope
 Denise Coy
 Jeffrey Currier
 Diane Darling & Darrell Nance
 Lynne De Merritt
 Alane Dorhman
 Melisa Doss
 Cheryl Eavey
 Paulette Elster
 Jane & Gary Erickson

Susan Erickson & Sarah Warner
 Mary Farley
 Thea Fefer
 Katherine Feldman
 Cynthia Jean Ferrell
 Susan Fitch
 Sharon Frucci & Max Auguste
 Randall Fulton
 Brian Giddens & Steve Rovig
 Brenda & David Gilbert
 Marc Gilmartin
 Joan Grant
 John B. Griffiths
 Susan & Frank Grijalva
 Kathryn Hamilton-Wang & Steve Wang
 Judith Hance
 Ben & Dorothea Hanich
 Faith Hanna
 Andrea Hanses & Matthew Nugent
 Shuko Hashimoto
 Erin Hawley
 Jim Hearne
 David Henderson
 Judith Herrigel
 Anne Herrmann & Albert Ortiz
 Connie & Dan Hungate
 Margaret Hunt
 Ann Ishimaru
 Natarajan Janarthanan & Ponni Rajagopal
 David Johnson
 Ellen Kissman
 Lee Klastorin & Ralph Walden
 Lyn & Richard Klein
 E. Katherine Knowlton & Stephen Feldman
 Donna & Richard Koerker
 Richard Kost
 Judy Koven
 Carrie Lafferty
 Joanne Laz
 John Lee & Pm Weizenbaum
 Barbara Lewis
 Leslie Lim
 Kristin Lindlan
 Judith & William Matchett
 John McBride & Naomi Skudler
 Robin L. McCabe
 Charlotte & Dennis McFeely
 Nancy McKay
 Kathy McNaught
 Carl Meinecke
 Jamie & Jeffrey Merriman-Cohen
 Iulia Irina Metzner
 Karen & James Mhyre

April Millar
 Signa Moe & Dan Iverson
 Lynn Morgan
 Mary Moser & Mike Hayes
 Sue Moser & Scott Seramur
 Robert Moyer
 Koji Mukai
 Colleen Murphy
 Barbara Naar
 Jeanette Norris & Steven Buck
 Martin Oiye
 Janet Oliver
 Andrew Payne
 Katalin & James Pearman
 Marie Perilman
 Philip Porach & Ron Niemeyer
 Megan Pursell
 Esther Quint
 Linda Reeder
 Rachel & David Robert
 Pacita Roberts
 Eileen Robison & Tom Noonan
 Marcie Rubardt
 Jacqui Rublee
 Kazuki Sawanoi & Megumi Sawanoi
 Karen Sayers
 Craig Schieber
 Debra Schwartz
 Lynn Schwendiman & Ray Stark
 Omar Senghore
 Roberta Sherman & Charles Meconis
 Eric Sieferman & Cindy Carter
 Randall Smith & Sharon Metcalf
 Anne Solomon
 Jayne Stevenson
 Henry Stoll & Wendy Hamai
 Mark Thomas & Beverly Mand
 Molly & William Tomita
 Betty Tonglao
 Beth Traxler
 Judy Tsou & David Carlson
 Silvia Vega
 Michele Wang & Gregory Carter
 Alison Warp
 Michael Weidemann
 Elizabeth Wery
 Mary Whisner & Mary Hotchkiss
 Edith Wollin
 Joan Wong
 Robert Wood
 Igor Zverev
 Anonymous Friends

THANK YOU to our SUPPORTERS





Our Core **VALUES**

EXCELLENCE

We are dedicated to the pursuit of excellence and the expansion of human potential through arts and learning.

INNOVATION

We encourage artistic risk-taking and collaboration to advance new creative expressions and engage important issues of our time.

CONNECTION

We bring diverse artists, community, students and faculty together in transformative experiences that promote the exchange of ideas and perspectives from around the world.

INSPIRATION

We cultivate the capacity to find joy and meaning through creativity and artistic exploration.

Meany Center **MISSION**

Meany Center for the Performing Arts at the University of Washington fosters innovative performances that advance public engagement, cultural exchange, creative research and learning through the arts. Meany Center provides opportunities for diverse artists, community, students and faculty to connect in the discovery and exploration of the boundless power of the arts to create positive change in the world.